

MANITEX 2592 OUTLINE DIMENSIONS

These dimensions are general, not for engineering.
Some dimensions depend on truck selected.

STANDARD EQUIPMENT

- 4-section telescopic boom 28' (8.53m) to 92' (28.04m)
- Pedestal, turret, rotation bearing & swing system
- 20' (6.10m) subframe
- A-frame link type outriggers
- Out-and-down rear stabilizers
- 3-sheave boom point
- Boom-hoist cylinder
- 2-speed planetary hoist
- Dual operator stations
- Engine start/stop
- Removable boom rest
- 5-ton (4.5-mt) hook & bail
- 372° non-continuous rotation
- 80-gallon (303-liter) hydraulic reservoir
- 3-section vane-type hydraulic pump
- System pressure gauge
- Load-moment indicator, audio/visual
- Anti-two-block shutoff
- Audible outrigger/stabilizer motion alarm
- Back-up alarm
- Signal horn
- 300' (91.44m) of 1/4" (14.3mm) EIPS IWRC wire rope
- Finish paint in Manitex colors
- Operator/service/parts manual

TRUCK CHASSIS DATA

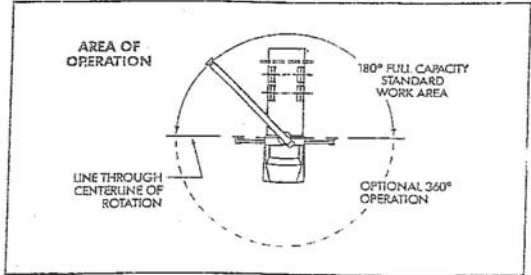
Minimum Requirements:

Some configurations and options may increase requirements

Wheelbase	234"	5,944mm
Cab to axle	168"	4,267mm
Front axle gross weight rating	14,000 lbs.	6,350 kgs
Rear axle gross weight rating	38,000 lbs.	17,237 kgs
Truck frame section modulus	20.0 in ³	328 cc
	110,000 psi	758,450 kPa
Nominal frame width	34"	864mm

WEIGHTS

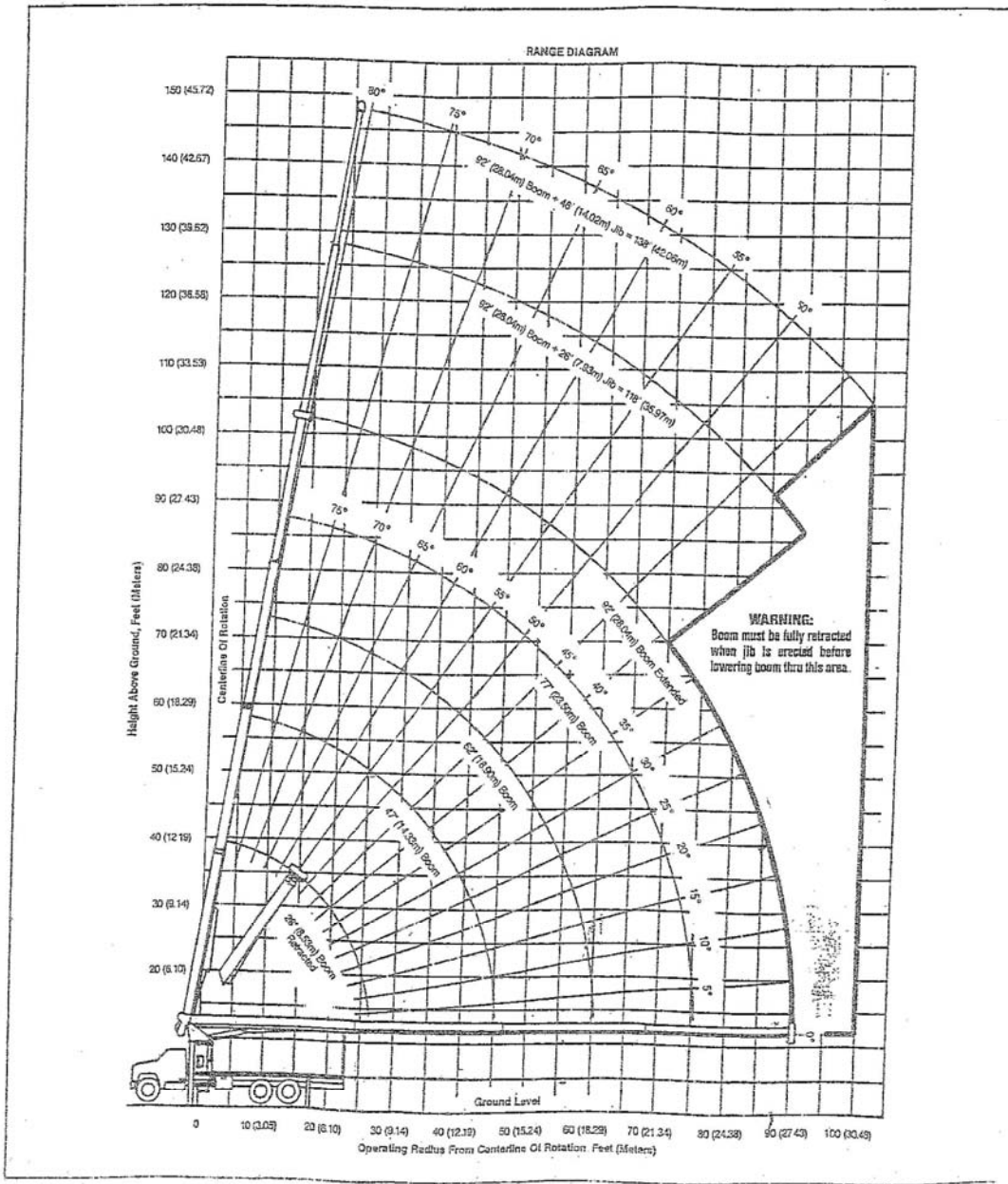
Total crane, including hydraulic fluid	Lbs. 20,300	Kgs. 9,208
Additions:		
26' (7.93m) fixed-length jib	819	372
46' (14.02m) telescopic jib	1,230	558
15-ton (13.6-mt) single-sheave block	263	119
25-ton (22.7-mt) triple-sheave block	380	172
Hanger sheave for 5- and 6-part line	38	17
20'4" (6.20m) steel or wood bed	1,900	862



ALLOWABLE LINE PULL					
1-PART LINE	2-PART LINE	3-PART LINE	4-PART LINE	5-PART LINE	6-PART LINE
8,500 Lbs. (3,856 Kgs.) ¹ 7,400 Lbs. (3,357 Kgs.) ²	17,000 Lbs. (7,711 Kgs.) ¹ 14,800 Lbs. (6,713 Kgs.) ²	25,500 Lbs. (11,567 Kgs.) ¹ 22,200 Lbs. (10,070 Kgs.) ²	34,000 Lbs. (15,422 Kgs.) ¹ 29,600 Lbs. (13,426 Kgs.) ²	42,500 Lbs. (19,278 Kgs.) ¹ 37,000 Lbs. (16,783 Kgs.) ²	50,000 Lbs. (22,680 Kgs.) ¹ 44,400 Lbs. (20,140 Kgs.) ²
<p>WARNING: Anti-two block system must be in good operating condition before operating crane. Refer to Owner's Manual. Keep at least 3 wraps of load line on drum at all times.</p> <p>¹With 1/4" (14.3mm) 6 x 25 IWRC (3.5:1 S.F.) 29,750 Lbs. (13,495 Kgs.) Minimum Breaking Strength ²With 1/4" (14.3mm) Rotation Resistant (5.0:1 S.F.) 37,000 Lbs. (16,783 Kgs.) Minimum Breaking Strength</p>					



**GENERAL SPECIFICATIONS
MODEL 2592 TRUCK-MOUNTED CRANE**





This capacity chart is for reference use only and must not be used for a specific serial number crane.
Lifting off the main boom point while the swing-around jib is erected is not approved.

MANITEX
ANSI B30.5
REQUIREMENTS

OUTRIGGERS AND STABILIZERS EXTENDED																
Operating Radius		Load Rating 28' (8.53m) Boom			Load Rating 47' (14.32m) Boom			Load Rating 62' (18.90m) Boom			Load Rating 77' (23.47m) Boom			Load Rating 92' (28.04m) Boom		
Feet	Meters	Loaded Bm. Angle	Pounds	Kilograms	Loaded Bm. Angle	Pounds	Kilograms	Loaded Bm. Angle	Pounds	Kilograms	Loaded Bm. Angle	Pounds	Kilograms	Loaded Bm. Angle	Pounds	Kilograms
5'	1.52	79°	50,000	22,679												
8'	2.44	72°	37,800	17,145												
10'	3.05	68°	32,000	14,514	78°	20,500	9,298									
12'	3.66	63°	26,650	12,088	75°	20,500	9,298	79°	20,500	9,298						
15'	4.57	56°	20,900	9,480	71°	20,500	9,298	77°	18,300	8,300	80°	15,000	6,803			
20'	6.10	42°	15,000	6,803	65°	15,000	6,803	72°	14,800	6,713	76°	12,700	5,760	79°	9,900	4,490
25'	7.62	21°	11,300	5,125	58°	11,300	5,125	67°	11,300	5,125	72°	10,900	4,944	76°	8,680	3,937
30'	9.14				50°	9,170	4,159	62°	9,170	4,159	68°	9,170	4,159	73°	7,740	3,510
35'	10.67				41°	7,400	3,356	56°	7,400	3,356	64°	7,400	3,356	70°	6,760	3,066
40'	12.19				30°	6,050	2,744	50°	6,050	2,744	60°	6,050	2,744	66°	5,920	2,685
45'	13.72							43°	5,000	2,267	55°	5,000	2,267	63°	5,000	2,267
50'	15.24							36°	4,190	1,900	50°	4,190	1,900	59°	4,190	1,900
55'	16.76							26°	3,400	1,542	45°	3,400	1,542	55°	3,400	1,542
60'	18.29										39°	2,830	1,283	51°	2,830	1,283
65'	19.81										32°	2,310	1,047	46°	2,310	1,047
70'	21.34										24°	1,880	852	42°	1,880	852
75'	22.86													36°	1,550	703
80'	24.38													30°	1,240	562
85'	25.91													22°	970	439

Deduction for Stowed Jib

Fixed Jib	460	209	270	123	210	95	170	77	140	64
Telescopic Jib	690	313	410	186	310	141	250	113	210	95

JIB LOAD RATING IN LBS./KGS. WITH OUTRIGGERS AND STABILIZERS EXTENDED										
Operating Radius		Fixed Jib Load Rating				Telescopic Jib Load Rating				
Feet	Meters	Loaded Bm. Angle	Pounds	Kilograms	Loaded Bm. Angle	Pounds	Kilograms	Loaded Bm. Angle	Pounds	Kilograms
25'	7.62	79°	5,500	2,494	79°	5,300	2,404			
30'	9.14	77°	5,000	2,267	77°	4,850	2,199	79°	3,400	1,542
35'	10.67	75°	4,610	2,091	75°	4,350	1,973	77°	3,300	1,496
40'	12.19	72°	4,160	1,886	72°	3,900	1,769	76°	3,200	1,451
45'	13.72	70°	3,750	1,700	70°	3,480	1,578	74°	3,040	1,378
50'	15.24	67°	3,380	1,533	67°	3,110	1,410	72°	2,780	1,260
55'	16.76	65°	3,070	1,392	65°	2,800	1,270	69°	2,520	1,143
60'	18.29	62°	2,790	1,265	62°	2,500	1,133	67°	2,280	1,034
65'	19.81	59°	2,480	1,124	59°	2,190	993	65°	2,070	938
70'	21.34	56°	2,040	925	56°	1,750	793	62°	1,880	852
75'	22.86	53°	1,670	757	53°	1,380	625	60°	1,710	775
80'	24.38	49°	1,350	612	49°	1,060	480	58°	1,520	689
85'	25.91	46°	1,080	489	46°	780	353	55°	1,240	562
90'	27.43	42°	840	381	42°	540	244	52°	990	449
95'	28.96							49°	780	353
100'	30.48							46°	580	263

INFORMATION: Deductions must be made from rated loads for stowed jib, optional attachments, hooks, and load blocks (see deduction chart). Weights of slings and all other load handling devices shall be considered a part of the load.

Deductions From Rated Loads for Manitex Supplied Load Handling Devices	
Hanger Sheave	50 Lbs. (23 Kgs.)
Overhaul Ball	120 Lbs. (54 Kgs.)
Single-Sheave Load Block	260 Lbs. (118 Kgs.)
Double-Sheave Load Block	350 Lbs. (159 Kgs.)
Triple-Sheave Load Block	380 Lbs. (172 Kgs.)
Hose Reel	140 Lbs. (64 Kgs.)
Swing-Around Jib	See load chart

DO NOT OPERATE A MANITEX TRUCK-MOUNTED CRANE OR ACCESSORIES WITHIN 10' (3.05m) OF LIVE POWER LINES.

Because of continuing improvements, Manitex reserves the right to change product specifications without notice.

WARNING: Before operating any Manitex crane, the operator must read and understand the owner's manual and other instructions for a specific serial number crane. This chart is only a guide. The notes and warnings are for illustration only and cannot be used to operate a crane.

The operating radius shown in the jib load rating chart is for fully extended boom only. When boom is not fully extended, use only loaded boom angle to determine load rating of jib.

All load ratings below the heavy line on the capacity charts are stability limited capacities, and do not exceed 85% of tipping.

Crane load ratings on outriggers are based on freely suspended loads with the machine leveled and standing on a firm uniform supporting surface. No attempt shall be made to move a load horizontally on the ground in any direction.

Main boom load ratings above the heavy line are based on a constant hoist cylinder pressure, machine structural competence, and do not exceed 85% of tipping. Jib load ratings above the heavy line are based only on machine structural competence and do not exceed 85% of tipping.

MANITEX, INC.
A Subsidiary of The Manitowoc Company, Inc.
4300 Acapulco Avenue • McAllen, Texas 78503
Telephone: 210-630-2690 • Telefax: 210-630-2695

