

FMC

Link-Belt®
HTC-50
Hydraulic Truck Crane
50-ton (45.35 metric ton)

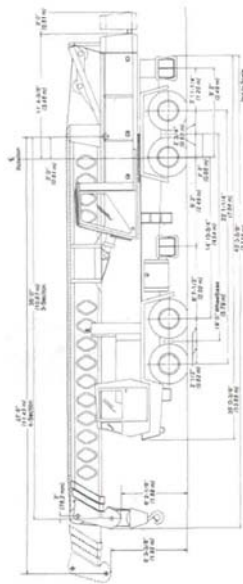
PCSA class 10-152



| | |
|-----------------------------------|-------------------------|
| Capacity at maximum tip height | 4,000 (1 814 kg) |
| Maximum tip height | 189' 0" (57.61 m) |
| Maximum boom plus jib | 184' 6" (56.24 m) |
| Std. Machine weight | 70,920 lbs. (32 169 kg) |
| Machine weight with optional boom | 75,570 lbs. (34 263 kg) |



Link-Belt® HTC-50 hydraulic truck crane
General dimensions



70

Link-Belt® HTC-50 hydraulic truck crane
Specifications and general dimensions

| | |
|----------------------------------|---|
| Height with one drum | 10' 9-1/8" (3.28 m) |
| with two drums | 10' 9-1/8" (3.28 m) |
| Travel length | 45' 4-3/8" (13.83 m) |
| Width | 8' 0" (2.44 m) |
| Tallswing | 12' 1/8" (3.66 m) |
| Wheelbase | 228" (5.79 m) |
| Outrigger spread | 20' 0" (6.10 m) |
| Counterweight | 6,900 lbs. (3,130 kg) |
| Transmission | Eaton Roadranger RT613 13-forward 3-reverse |
| Maximum road speed | 50.59 m.p.h. (81.40 km/h) |
| Gradeability | 37.58% |
| Turning radius (outside corner) | 43' 0" (13.11 m) |
| Minimum ground clearance | 9-1/2" (0.24 m) |
| Standard engine | GM 6-71N diesel 238 hp at 2,100 rpm |
| Optional engine | Cummins NTCC-230 230 hp at 2,100 rpm |
| Standard boom length - 3 section | 35' 0" - 90' 0" (10.67 m - 27.43 m) |
| Optional boom length - 4 section | 37' 6" - 120' (11.43 m - 36.58 m) |
| Standard fly - 3 section | 32' 0" (9.75 m) |
| Optional jib - 3 section | 28' 0" / 20' 0" (8.53 m / 6.10 m) |
| Optional fly - 4 section | 34' 6" (10.52 m) |
| Optional jib - 4 section | 30' (9.14 m) A-Frame |
| Maximum permissible line speed | 479 f.p.m. (146.00 m/min) |
| Maximum permissible line pull | 16,800 lbs. (7,620 m) |

71



Link-Belt® HTC-50 hydraulic truck crane

Lifting capacities

Maximum pick at given radius

| Load Radius | 90' (27.43 m) boom only | | | |
|---------------|-------------------------|-----------|-----------|-----------|
| | Over Rear | | Over Side | |
| | Pounds | Kilograms | Pounds | Kilograms |
| 10' (3.05 m) | 100,000 | 45 360 | 100,000 | 45 360 |
| 12' (3.66 m) | 88,600 | 40 189 | 85,400 | 38 737 |
| 15' (4.57 m) | 73,100 | 33 158 | 69,200 | 31 389 |
| 20' (6.10 m) | 54,300 | 24 630 | 52,900 | 23 995 |
| 25' (7.62 m) | 37,700 | 17 101 | 36,700 | 16 647 |
| 30' (9.14 m) | 27,100 | 12 293 | 25,300 | 11 476 |
| 35' (10.67 m) | 21,500 | 9 752 | 19,700 | 8 936 |
| 40' (12.19 m) | 17,000 | 7 711 | 15,200 | 6 895 |
| 45' (13.72 m) | 13,600 | 6 169 | 11,900 | 5 398 |
| 50' (15.24 m) | 11,500 | 5 216 | 9,900 | 4 491 |
| 55' (16.76 m) | 9,500 | 4 309 | 8,000 | 3 629 |
| 60' (18.29 m) | 7,800 | 3 538 | 6,400 | 2 903 |
| 65' (19.81 m) | 6,800 | 3 084 | 5,500 | 2 495 |

Maximum pick with fully extended boom

| Load Radius | 90' (27.43 m) boom only | | | |
|---------------|-------------------------|-----------|-----------|-----------|
| | Over Rear | | Over Side | |
| | Pounds | Kilograms | Pounds | Kilograms |
| 30' (9.14 m) | 23,300 | 10 569 | 23,300 | 10 569 |
| 35' (10.67 m) | 20,300 | 9 208 | 19,700 | 8 936 |
| 40' (12.19 m) | 17,000 | 7 711 | 15,200 | 6 895 |
| 45' (13.72 m) | 13,600 | 6 169 | 11,900 | 5 398 |
| 50' (15.24 m) | 11,500 | 5 216 | 9,900 | 4 491 |
| 55' (16.76 m) | 9,500 | 4 309 | 8,000 | 3 629 |
| 60' (18.29 m) | 7,800 | 3 538 | 6,400 | 2 903 |
| 65' (19.81 m) | 6,800 | 3 084 | 5,500 | 2 495 |

Link-Belt® HTC-50 hydraulic truck crane

Lifting capacities

Maximum pick with optional boom plus fly

| Load Radius | 120' (36.58 m) boom plus 34' 6" (10.52 m) fly | | | |
|---------------|---|-----------|-----------|-----------|
| | Over Rear | | Over Side | |
| | Pounds | Kilograms | Pounds | Kilograms |
| 30' (9.14 m) | 7,000 | 3 175 | 7,000 | 3 175 |
| 35' (10.67 m) | 6,900 | 3 130 | 6,900 | 3 130 |
| 40' (12.19 m) | 6,700 | 3 039 | 6,700 | 3 039 |
| 45' (13.72 m) | 6,600 | 2 994 | 6,600 | 2 994 |
| 50' (15.24 m) | 6,500 | 2 948 | 6,500 | 2 948 |
| 55' (16.76 m) | 6,400 | 2 903 | 6,400 | 2 903 |
| 60' (18.29 m) | 5,500 | 2 495 | 5,500 | 2 495 |
| 70' (21.34 m) | 4,100 | 1 860 | 4,100 | 1 860 |
| 80' (24.38 m) | 2,900 | 1 315 | 2,900 | 1 315 |

Maximum pick with fully extended optional boom

| Load Radius | 120' (36.58 m) boom only | | | |
|---------------|--------------------------|-----------|-----------|-----------|
| | Over Rear | | Over Side | |
| | Pounds | Kilograms | Pounds | Kilograms |
| 25' (7.62 m) | 16,300 | 7 394 | 16,300 | 7 394 |
| 30' (9.14 m) | 16,300 | 7 394 | 16,300 | 7 394 |
| 35' (10.67 m) | 15,800 | 7 167 | 15,800 | 7 167 |
| 40' (12.19 m) | 13,800 | 6 170 | 13,800 | 6 170 |
| 45' (13.72 m) | 12,500 | 5 670 | 12,500 | 5 670 |
| 50' (15.24 m) | 11,200 | 5 080 | 11,200 | 5 080 |
| 55' (16.76 m) | 9,900 | 4 491 | 9,200 | 4 173 |
| 60' (18.29 m) | 8,800 | 3 992 | 7,600 | 3 447 |
| 70' (21.34 m) | 6,400 | 2 903 | 5,100 | 2 313 |

Operation and maintenance of this machine must be in compliance with the information in the operator's, parts, and safety manuals.

Link-Belt® HTC-50 hydraulic truck crane

Basic machine

Base price of machine includes the following features as standard equipment:

- 35' 0" - 90' 0" (10.67 m - 27.43 m) three-section power boom
- 32' 0" (9.75 m) fly
- Boom angle indicator
- Drum rotation indicator
- Four head sheaves
- Two double acting hydraulic boom hoist cylinders with integral check valves.
- Foot and hand boom hoist control
- One drum with two-speed hoisting
- Power load lowering
- Two-shoe clutch with free-fall controlled by foot pedal
- 550' 0" (167.64 m) 3/4" (19 mm) hoist line
- Foot and hand throttle control
- Heater and defroster fan
- Windshield wiper
- Foot and hand swing brake
- FMC carrier
- GM 6V-71N diesel engine
- 12:00 x 20 (16-PR) transport type tires — front
- 11:00 x 20 (12-PR) transport type tires — rear
- Power hydraulic outrigger control in upper
- One-man cab
- Heater and defroster fan
- Windshield wiper
- Seat belt