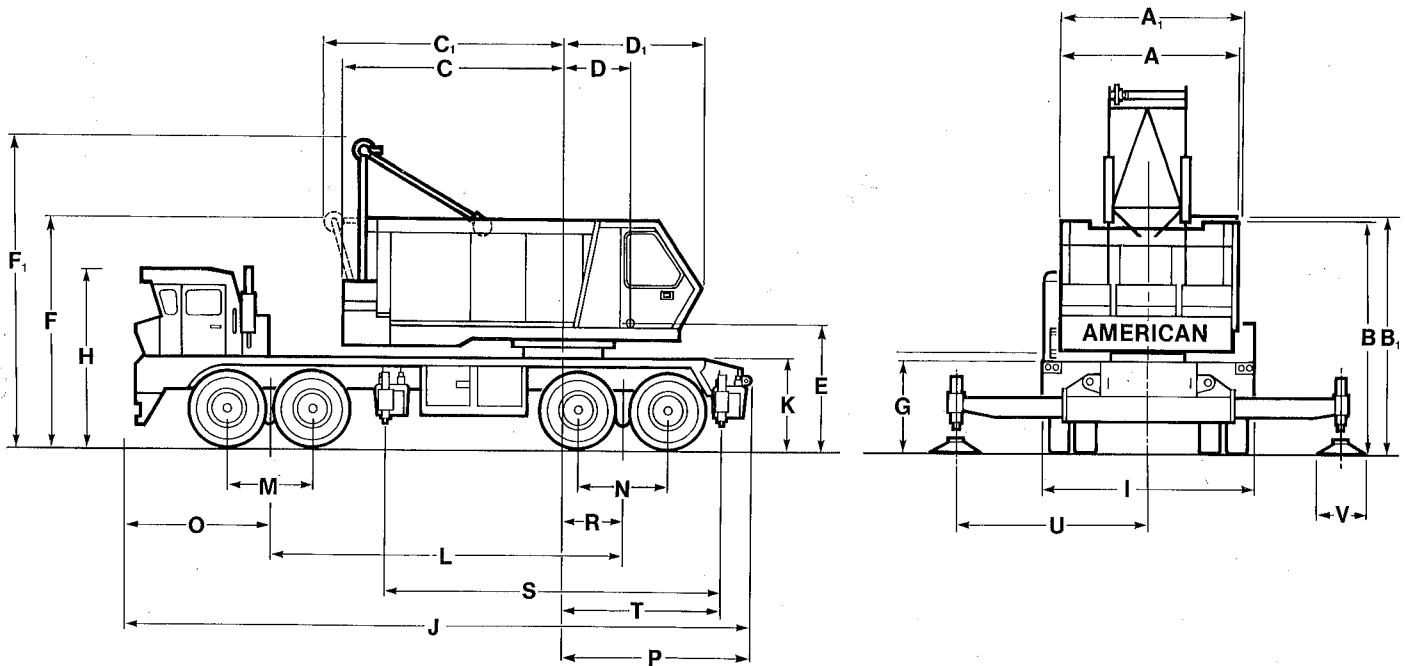




# 7530

# CARRIER SPECIFICATIONS



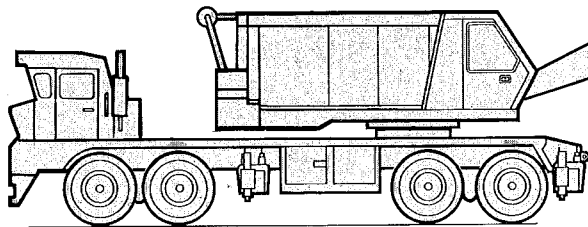
## GENERAL SPECIFICATIONS

A.	Width of machinery cab	10'6"	3200 mm	M.	Distance between front axles	5'0"	1524 mm
A <sub>1</sub> .	Width over operator's cab	10'11"	3328 mm	N.	Distance between rear axles	5'4"	1625 mm
B.	Height of machinery cab	12'11¼"	3944 mm	O.	Front of carrier to centerline of front bogie	7'11½"	2420 mm
B <sub>1</sub> .	Height over operator's cab	12'11¼"	3944 mm	P.	Centerline of rotation to rear of carrier	10'10½"	3315 mm
C.	Tailswing over counterweight	14'5½"	4712 mm	R.	Centerline of rotation to centerline of rear bogie	3'6"	1067 mm
C <sub>1</sub> .	Tailswing over A-frame retracted	16'9½"	5118 mm	S.	Centerline of front outrigger to centerline of rear outrigger	20'4½"	6212 mm
D.	Centerline of rotation to centerline of boom foot	4'1½"	1259 mm	T.	Centerline of rotation to centerline of rear outrigger	9'11½"	3036 mm
D <sub>1</sub> .	Centerline of rotation to front of operator's cab	9'1"	2768 mm	U.	Hydraulic outriggers extended	11'0"	3353 mm
E.	Ground to centerline of boom foot	6'9¼"	2063 mm	V.	Outrigger float diameter	36"	914 mm
F.	Height over A-frame lowered	13'5"	4090 mm		Turning radius over front bumper	55'0"	16764 mm
F <sub>1</sub> .	Height over A-frame raised	21'9½"	6642 mm		Clearance under rear equalizing beam	7¾"	197 mm
G.	Ground to bottom of counterweight	5'2"	1575 mm		Clearance under rear differential	15¼"	387 mm
H.	Height over carrier cab	9'3"	2819 mm				
I.	Overall carrier width	11'0"	3353 mm				
J.	Overall carrier length	35'2"	10719 mm				
K.	Height over mounting plate	4'3½"	1308 mm				
L.	Centerline of front bogie to centerline of rear bogie (wheelbase)	19'10"	6044 mm				

# 7530 TRAVELING WEIGHTS

IN POUNDS (KILOGRAMS)

X = IN PLACE  
O = REMOVED



TAPERED TIP  
BOOM FOLDED

HAMMERHEAD TIP

**Boom Rearward**

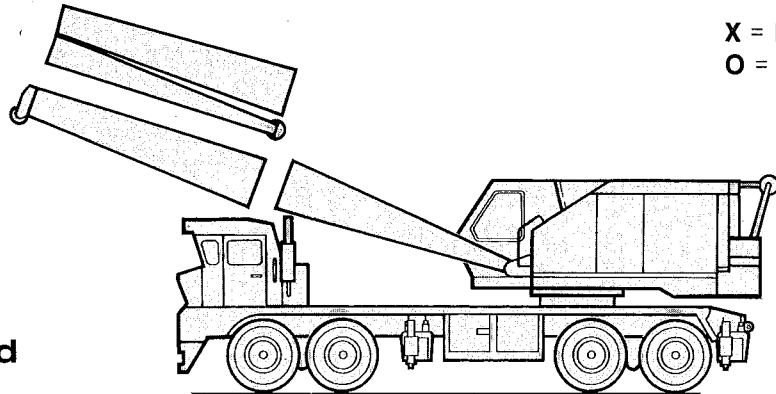
TAPERED TIP FOLDED	OUTER BOOM AND HAMMER HEAD	BLOCK	INNER BOOM	COUNTER-WEIGHT	FRONT OUTRIGGER	REAR OUTRIGGER	FRONT TANDEM		REAR TANDEM		GROSS WEIGHT	
							POUNDS	KGS.	POUNDS	KGS.	POUNDS	KGS.
X	O	X	X	X	X	X	64,640	29321	94,290	42770	158,930	72091
X	O	X	X	O	X	X	36,610	16606	88,420	40107	125,030	56714
X	O	X	X	O	O	X	32,220	14615	86,450	39214	118,670	53829
X	O	X	X	O	X	O	38,670	17541	80,000	36288	118,670	53829
X	O	X	X	O	O	O	34,290	15554	78,040	35399	112,330	50953
X	O	O	X	X	X	X	64,750	29371	90,660	41123	155,410	70494
X	O	O	X	O	X	X	36,720	16656	84,790	38461	121,510	55117
X	O	O	X	O	O	X	32,330	14665	82,830	37572	115,160	52237
X	O	O	X	O	X	O	38,790	17595	76,340	34628	115,160	52237
X	O	O	X	O	O	O	34,400	15604	74,410	33752	108,810	49356
O	X	X	X	X	X	X	63,510	28808	95,360	43255	158,870	72063
O	X	X	X	O	X	X	35,480	16094	89,500	40597	124,980	56691
O	X	X	X	O	O	X	31,100	14107	87,530	39704	118,630	53811
O	X	X	X	O	X	O	37,550	17033	81,080	36778	118,630	53811
O	X	X	X	O	O	O	33,160	15041	79,120	35889	112,280	50930
O	X	O	X	X	X	X	63,620	28858	91,730	41609	155,350	70467
O	X	O	X	O	X	X	33,590	15236	85,870	38951	121,460	55094
O	X	O	X	O	O	X	31,200	14152	83,900	38057	115,100	52209
O	X	O	X	O	X	O	37,660	17083	77,440	35127	115,100	52209
O	X	O	X	O	O	O	33,270	15091	75,490	34242	108,760	49334
O	O	O	X	X	X	X	69,770	31648	82,200	37286	151,970	68934
O	O	O	X	O	X	X	41,740	18933	76,330	34623	118,070	53557
O	O	O	X	O	O	X	37,350	16942	74,360	33730	111,710	50672
O	O	O	X	O	X	O	43,800	19868	67,910	30804	111,710	50672
O	O	O	X	O	O	O	39,420	17881	65,950	29915	105,370	47796
O	O	O	O	X	X	X	71,680	32514	77,130	34986	148,810	67500
O	O	O	O	O	X	X	43,650	19800	71,260	32324	114,910	52123
O	O	O	O	O	O	X	39,270	17813	69,300	31435	108,570	49247
O	O	O	O	O	X	O	45,720	20739	62,850	28509	108,570	49247
O	O	O	O	O	O	O	41,330	18747	60,880	27615	102,210	46362
Carrier with bullgear — less upper and outriggers							24,660	11186	41,580	18861	66,250	30051

10/20/82 08:43:03

**NOTE: Because of variable manufacturing tolerances a variance of ±3% should be allowed on the above weights. SEE OPERATOR'S MANUAL FOR MAXIMUM MPH TRAVEL SPEED RESTRICTIONS AS LIMITED BY TIRE LOADS.**

# 7530 TRAVELING WEIGHTS

IN POUNDS (KILOGRAMS)



X = IN PLACE  
O = REMOVED

TAPERED TIP  
BOOM FOLDED

HAMMERHEAD TIP

Boom Forward

TAPERED TIP FOLDED	OUTER BOOM AND HAMMER HEAD	BLOCK	INNER BOOM	COUNTER- WEIGHT	FRONT OUTRIGGER	REAR OUTRIGGER	FRONT TANDEM		REAR TANDEM		GROSS WEIGHT	
							POUNDS	KGS.	POUNDS	KGS.	POUNDS	KGS.
X	O	X	X	X	X	X	17,400	7893	141,530	64198	158,930	72091
X	O	X	X	O	X	X	33,470	15182	91,560	41532	125,030	56714
X	O	X	X	O	O	X	29,090	13195	89,600	40643	118,670	53829
X	O	X	X	O	X	O	35,530	16026	83,140	37712	118,670	53829
X	O	X	X	O	O	O	31,150	14130	81,180	36823	112,330	50953
X	O	O	X	X	X	X	16,050	7280	139,360	63214	155,410	70494
X	O	O	X	O	X	X	32,120	14570	89,390	40547	121,510	55117
X	O	O	X	O	O	X	27,730	12578	87,430	39658	115,160	52237
X	O	O	X	O	X	O	34,190	15509	80,970	36728	115,160	52237
X	O	O	X	O	O	O	29,800	13517	79,010	35839	108,810	49356
O	X	X	X	X	X	X	18,520	8401	140,370	63672	158,870	72063
O	X	X	X	O	X	X	34,580	15685	90,400	41005	124,980	56691
O	X	X	X	O	O	X	30,190	13694	88,400	40116	118,630	53811
O	X	X	X	O	X	O	36,650	16624	81,980	37186	118,630	53811
O	X	X	X	O	O	O	32,260	14633	80,020	36297	112,280	50930
O	X	O	X	X	X	X	17,170	7788	138,200	62688	155,350	70467
O	X	O	X	O	X	X	33,220	15069	88,240	40026	121,460	55094
O	X	O	X	O	O	X	28,830	13077	86,270	39132	115,100	52209
O	X	O	X	O	X	O	35,290	16008	79,810	36202	115,100	52209
O	X	O	X	O	O	O	30,900	14016	77,840	35308	108,760	49334
O	O	O	X	X	X	X	9,820	4454	142,150	64479	151,970	68934
O	O	O	X	O	X	X	25,880	11739	92,190	41817	118,070	53557
O	O	O	X	O	O	X	21,490	9748	90,220	40924	111,710	50672
O	O	O	X	O	X	O	27,950	12678	83,760	37994	111,710	50672
O	O	O	X	O	O	O	23,560	10687	81,810	37109	105,370	47796
O	O	O	O	X	X	X	6,790	3080	142,020	64420	148,810	67500
O	O	O	O	O	X	X	22,850	10365	92,060	41758	114,910	52123
O	O	O	O	O	O	X	18,470	7017	90,100	40869	108,570	49247
O	O	O	O	O	X	O	24,930	11308	83,640	37939	108,570	49247
O	O	O	O	O	O	O	20,530	9312	81,680	37050	102,210	46362
Carrier with bullgear and outriggers — less upper							22,230	10084	31,320	14207	53,550	24290

10/20/82 08:43:03

**NOTE: Because of variable manufacturing tolerances a variance of ±3% should be allowed on the above weights.**  
SEE OPERATOR'S MANUAL FOR MAXIMUM MPH TRAVEL SPEED RESTRICTIONS AS LIMITED BY THE LOADS.  
WEIGHTS DO INCLUDE FUEL TANKS HALF FULL. DO NOT INCLUDE ROPE ON DRUMS, OUTRIGGER PONTOONS, OR MISC. GEAR.

# 7530 CARRIER SPECIFICATIONS

Specifications for AMERICAN MODEL 7530, 125 ton (113.4 M.T.), 238" (6045 mm) wheelbase, 8 x 4 carrier.

**FRAME:** Box welded frame members designed and manufactured to provide adequate support for crane weight and capacities; high strength alloy steel used throughout the construction of the carrier; tow bars are provided front and rear; full length fenders, locked side mounted storage box and float storage racks.

**HYDRAULIC OUTRIGGERS:** Two independent housings fabricated from "T-1" steel or equivalent; outrigger beams are hydraulically extended with integral hydraulic jacks; automatic check and manual shutoff valves in hydraulic jacks to assure maximum safety for all lifts; hardened chrome plated rams; fitted with 36" (914 mm) dia. T-1 steel floats. Outrigger housings are pin connected and removable; maximum stroke of vertical jacks is 12 inches (305 mm); maximum lift under floats is 9 inches (228.6 mm); this dimension can be adjusted to suit customer's requirements when installing the hydraulic jacks; outrigger controls are located at side of carrier with controls for RH outriggers on RH side of carrier and controls for LH outriggers on LH side.

**ENGINE:** Cummins NTCC-350 diesel engine, 6 cylinder, 5-1/2" (139.7 mm) bore x 6" stroke, 855 cu. in. displacement, rated 350 H.P. at 2100 R.P.M. thermostatically controlled radiator shutters.

**OPTIONAL ENGINE:** Detroit Diesel (GM) 6V-92-TAC Model No. 8067-7440 diesel engine; 6 cylinder, 4.84 bore x 5 stroke, 553 cu. in. displacement, rated 304 H.P. at 2100 R.P.M.

**FUEL TANK:** One 100 (U.S.) gallon (378.5 l) safety fuel tank.

**ELECTRICAL:** 12 volt system; 500 watt alternator; 2-12 volt batteries in parallel.

**POWER STEERING:** Garrison Twin-ram hydraulic power steering with Ross cam, 20" (508 mm) dia. steering wheel.

**CLUTCH:** Spicer 14" (356 mm) 2 plate pull type clutch hydraulically actuated.

**MAIN TRANSMISSION:** Eaton Model T11605A five speeds forward and one reverse.

Ratios:

First	6.35:1	Fourth	1.52:1
Second	3.75:1	Fifth	1.00:1
Third	2.39:1	Reverse	6.48:1

**AUXILIARY TRANSMISSION:** Spicer Model 1241-C, four speed.

Ratios:

First	2.37:1	Third	1.00:1
Second	1.24:1	Fourth	0.81:1

**FRONT AXLES:** Eaton 24 Series in tandem.

**REAR AXLE:** Clark Planetary BD-91,000 tandem assembly, non-spin differential on leading axle; ratio 9.00:1.

**SUSPENSION:** Hendrickson solid mount with rubber bushed torque rods front and rear.

**PROPEL SHAFT:** Mechanics needle bearing.

**SERVICE BRAKES:** Air on all wheels with 14.5 c.f.m. (6844 cu. cms/sec.) air compressor and two reservoirs; lining area 20" (508 mm) x 7" (178 mm) (1000 sq. in. (6451 cm<sup>2</sup>)) rear; 17-1/2" (445 mm) x 4" (101.6 mm) (495 sq. in. (3194 cm<sup>2</sup>)) front; 1495 sq. in. (9645 cm<sup>2</sup>) total lining area.

**EMERGENCY BRAKES:** Spring set, air release system on both rear axles with operator's control on dash panel; air reservoir for release of spring set chambers.

**WHEELS:** Cast spoke front; rear integrally cast with axles; 10:00 x 24 rims.

**TIRES:** Michelin 14:00 x 24, 4 steel ply.

**CAB:** One man 32" (813 mm) wide; fully enclosed; off set to left side; removable panel for engine access: boom guide; Bostrom driver's seat.

**STANDARD EQUIPMENT:** West Coast type mirrors, air windshield wiper, windshield washer, heater, defroster, sealed beam rectangular headlights, front and rear directional signals, combination stop and tail lights, backup lights, clearance lights on cab top and side, electric air horn, seat belts, dome light, indirect lighted instrument panel, speedometer, ammeter, fuel gauge, engine temperature indicator, air pressure gauge, oil pressure gauge, low air pressure warning signal, and tachometer.

**TOOLS:** Air valve and tire inflation kit, wheel wrench and bar, axle bearing wrench.

**OPTIONAL ACCESSORIES:** Jacobs engine brake, cold weather starting kit, back-up alarm, front outrigger, front bumper counterweight, carrier mounted hydraulic counterweight removal device, rear hitch, spare tire and rim, road ranger transmission, dual outrigger controls (from either side of carrier), remote control of outriggers, remote control of carrier.

## PERFORMANCE:

### STANDARD ENGINE Cummins NTCC-350

Maximum governed speed .....	42 MPH
Minimum governed speed .....	1.71 MPH
Maximum Gradeability (off highway with CTWT) .....	29%

### OPTIONAL ENGINE Detroit Diesel (GM) 6V-92-TAC

Maximum governed speed .....	42 MPH
Minimum governed speed .....	1.71 MPH
Maximum gradeability (off highway with CTWT) .....	25%

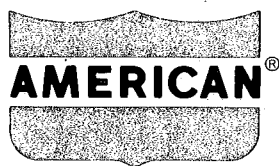
**NOTE:** In accordance with varying material situations, and the Company's policy of constant product improvement, these specifications subject to change without notice and without incurring responsibility to units previously sold.

6JR835

FORM NO. 7530-TCC-7

PRINTED IN U.S.A.

SOLD & SERVICED BY:



CONSTRUCTION MACHINERY DIVISION

63 SO. ROBERT ST., ST. PAUL, MN 55107



AMERICAN HOIST & DERRICK COMPANY

AN EQUAL OPPORTUNITY EMPLOYER